

WILBURY PRIMARY SCHOOL

Newsletter



SEPTEMBER 2025

Children at the heart of all we do!

This Newsletter can be accessed on our School website:

www.wilburyprimaryschool.org.uk

Dear Parent/Carer

Welcome back to a new school year and another busy and exciting term at Wilbury - we know the children will settle quickly into their new classes and new routines and we are all really looking forward to seeing them and you! It was lovely to see so many parents attending our end of term activities and performances at the end of the summer term.

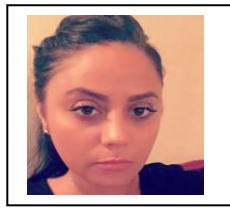
Please look at our website as we will add all the new information and routines here as soon as they become available - www.wilbury.primaryschool.org.uk

STAFF: I am pleased to say that we are fully staffed for the new year.

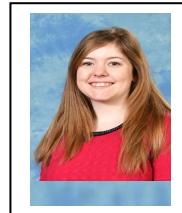
Heads of Departments: 2025-26:



Mrs Chaloner
Deputy HT/HoD:EY



Mrs Sovaros
Years 1 & 2



Mrs Hanlon
Years 3 & 4



Mrs Cobourne
Years 5 & 6

Mrs Bussawon has now returned from maternity leave.

SCHOOL IMPROVEMENTS: We would like to thank **Mustafa, Steve and Philip** our Premises and Site staff for all their hard work in organising the school and ensuring it was all completed on time for the start of the new academic year.

EARLY YEARS OPEN DAYS: We have arranged for parents and carers to visit our Early Years dept – Nursery and Reception – on **Thursday 20th November** and **Thursday 8th January from 9.30 – 11.00 am**. You are welcome to bring your preschool child to visit the department, meet our staff and to PLAY!

FLU VACCINATIONS: These will be applied in school on **Monday 6th October** – if you have not yet registered and wish your child to receive the vaccine please apply as soon as possible as this will close on 1st October. It is highly recommended that all children in Reception to Year 6 are vaccinated by nasal spray. Please contact us if you have any queries. <https://ncl.schoolvaccination.uk/flu/2024/enfield>

CURRICULUM STATEMENTS: Statements will be emailed to you next week outlining the topics your child's year group will be covering this term.

YEAR 6 – SECONDARY TRANSFER 2026: Open Evenings dates and information have already been emailed to you and further information will be added to our website as it is available. Parents are invited to an information session on **11th September 2025** at the Cineworld Cinema complex in Southbury Road EN1 1YQ – please register online to attend. Details were sent to you by email in July. Mrs Wise will also hold a parents information meeting here in school on **Friday, 12th September at 3.30 pm**.

AFTER SCHOOL ACTIVITY CLUBS: We will soon be emailing offers of places for various clubs but places are limited across the year groups so please understand not every child will be offered a place immediately, but will be on a waiting list.



Friends of Wilbury – We are delighted to say we have a brand new parents' committee this term and I am sure you will join us in wishing them every success and offering all the support they ask for. Further details will be available soon.
Wilbury Community.

Felix Project - food deliveries are every Tuesday. If you would like to receive some items, please contact Mrs Mohamed. PLEASE BE AWARE - The Felix Project collects fresh, nutritious food from suppliers that cannot be sold. Please visit <https://thefelixproject.org/about/our-story> for more information

PARENTS' DEPARTMENT MEETINGS: We will invite you to your child's department parents meeting as shown on the list of dates attached. This is an opportunity for you to ask any questions or raise any queries you may have.

SCHOOL MEALS: Lunches will continue to be free for all children from Reception to Year 6 for this year. This will save each family approximately £400 per child per year.

PARENTS' EVENINGS:

- **Wednesday 22nd October: 3.30 – 6.30 pm**
- **Thursday 23rd October – 3.30 – 5.30 pm**

Further details and booking instructions will be sent to you nearer the time.

ATTENDANCE: We would like all parents to know that our target for school attendance remains at **96%**. Please report your child's absence from school before **9.30am** by telephoning 020 88075335 (**Select Option 1 for Attendance**) and advise us of the reason for your child's absence.

NUT ALLERGIES: We are a healthy eating school and several of our children have severe nut allergies. Please **DO NOT** send any child into school with nut products (peanut butter, sesame seeds, nutella etc) or chocolates or biscuits and cakes containing nuts in their lunch boxes. Even the smell of these products can cause an allergic reaction to another child sitting nearby.

WATER BOTTLES: Please remember to send your child to school with a **plastic water** bottle showing their name – not a metal bottle.

KEEPING OUR CHILDREN SAFE: ROAD SAFETY & Parking in Wilbury Way/ Weir Hall Road: Please remember that road safety is the responsibility of everyone and we must ensure all our children are safe at all times. Please remember to park sensibly outside our school for the safety of all our children and **DO NOT** stop on the mini roundabout to drop off your child as this is extremely dangerous. In consideration of our neighbours, please do not park across their driveways whether the car is there or not. If they have a dropped kerb you could be fined up to £250 if traffic wardens are in attendance and it is towed.

Always ensure you are never blocking emergency vehicle access.

Please keep well away from the bus stop area as this is very dangerous for children boarding or leaving the buses.

L. Wise (Mrs)
Headteacher

DATES FOR YOUR SEPTEMBER DIARY:



SEPTEMBER:		
Wednesday	3 rd	School re-opens
Thursday	11 th	Secondary Transfer information meeting: Cineworld Enfield- you need to book online in advance.
Monday	22 nd	Year 4 commence swimming tuition 9.00 am KS2L Parents Meeting – Lower Hall
Tuesday	23 rd	9.00 am KS1 Parents Meeting Lower Hall
Wednesday	24 th	9.00 am KS2U Parents Meeting Lower Hall
OCTOBER:		
Friday	3 rd	Harvest/Garden Day – details to follow
Monday	6 th	Flu Vaccines – Reception to Year 6 – details to follow

BREAKFAST & AFTER SCHOOL CLUBS:

Please register your child at the school if you would like to attend either club at any time.

Please be aware that we cannot accept children in the clubs as emergency child care.

Each child must be registered with all your contact details and given a regular place for health and safety as well as insurance reasons. We need to be fully staffed for the group in the club. All places must be paid for in advance via parentpay.

Breakfast Club: 07.45/8.00 – 8.30 am After School Club 3.15 – 5.30 pm

SCHOOL STREETS: Please be aware that our school is part of the scheme - this means you cannot drive through Weir Hall Road between **08.30 – 9.15 am and 2.45 – 3.30 p.m.**). The area covered is between Wilbury Way/Lansbury Avenue. **Our address is also included in the ULEZ extended charging zone.**

The last day of the Autumn Term is **Friday 19th December** when we close at **2.00 p.m.**

School Closure Dates: 2025/2026:

INSET DAYS: (Staff training)

- **Monday 1st September**
- **Tuesday 2nd September**
- **Monday 5th January 2026**
- **Monday 23rd February 2026**
- **Monday 20th July 2026**