

# **WILBURY PRIMARY SCHOOL**

## **Newsletter**



**SEPTEMBER 2022**

*Children at the heart of all we do!*

**This Newsletter can be accessed on our School website:**

**[www.wilburyprimaryschool.org.uk](http://www.wilburyprimaryschool.org.uk)**

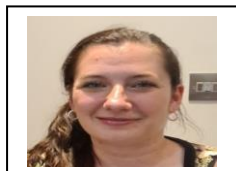
Dear Parent/Carer

Welcome back to a new school year and another busy term – we hope the children will settle quickly into their new classes and new routines.

Please look at our website as we will add all the new information and routines here as soon as they become available - [www.wilbury.primaryschool.org.uk](http://www.wilbury.primaryschool.org.uk)

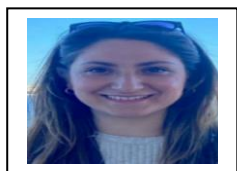
**STAFF:** I am pleased to say that we are fully staffed for the new year and would like to welcome our new teachers and other staff to Wilbury.

**Nursery**



Ms Evensen

**Year 2**



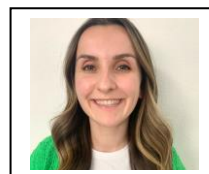
Miss Akkoyunoglu

**Year 2:**



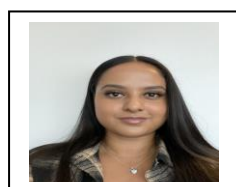
Miss Davies

**Year 3**



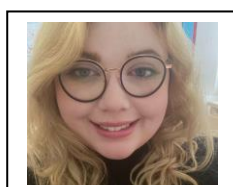
Miss Veseli

**Year 3:**



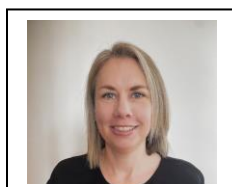
Miss Ali

**Year 3:**



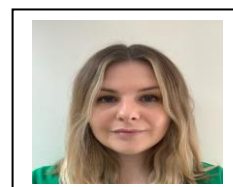
Mrs Stapleton

**Year 5:**



Mrs Cobourne

**Year 5:**



Miss Green

**Miss Chuchla** has recently married and returns to us as **Mrs Price**. Mrs Hall has now commenced her maternity leave - I am sure you will join me in sending them both our very best wishes.

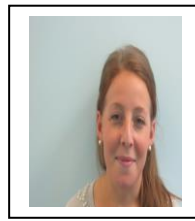
**Heads of Departments:**



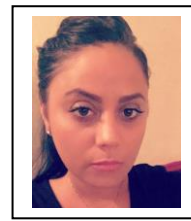
**Mrs Chaloner**  
Deputy HT/HoD:EY



**Mrs Hanlon**  
Years 1 & 2



**Miss Butler**  
Years 3 & 4



**Mrs Sovaros**  
Years 5 & 6



**SCHOOL IMPROVEMENTS:** **Mr Mustafa Bektas** now joins us permanently as our Premises Manager and we would like to thank him and **Steve**, our Site Officer, for all their hard work in organising the school and ensuring it was all completed on time for the start of the new academic year.

**NEW FOR SEPTEMBER 2022:** Please be aware that our school will soon be included in the **SCHOOL STREETS** scheme – this means you cannot drive through Weir Hall Road at set times of the day when children are arriving and leaving the premises. **(08.30 – 9.15 am and 2.45 – 3.30 p.m.)**. Cameras will be operating and fines of up to £120 will be issued by the council. The area included from be between Wilbury Way and Lansbury Avenue – the road will not be blocked but the cameras will be recording.



## **Friends of Wilbury - Fundraising**

### **Wilbury Community**

**Felix Project** - food deliveries are every Tuesday. If you would like to receive some items, please contact Ms Hassan. PLEASE BE AWARE - The Felix Project collects fresh, nutritious food from suppliers that cannot be sold. Please visit <https://thefelixproject.org/about/our-story> for more information

- Further information will be added as soon as it is available

**WATER BOTTLES:** Please remember to send your child to school with a **plastic water** bottle showing their name. We have recently had a serious accident in school with a child and a metal bottle.

**Turkish Surgery: Mrs Hassan** will be available in the office each Thursday from 8<sup>th</sup> September from 2.30 pm to assist any parents with any queries in Turkish – no appointments needed.-

**EARLY YEARS/Nursery:** It is not too late to apply for a place in our Nursery if your child was born between 01.09.2018 and 31.08.2019 – please ask at the office for further details or contact admissions on 020 83795501 or apply only at [\*\*www.eadmissions.org.uk\*\*](http://www.eadmissions.org.uk)

**ATTENDANCE:** We would like all parents to know that our target for school attendance remains at 96%. Please report your child's absence from school before **9.30am** by telephoning 020 88075335 (Select Option 1 for Attendance) and advise us of the reason for your child's absence. It is very important that your report the reason for every absence so we can effectively manage infection control in the school. Your co-operation would be greatly appreciated.

**CURRICULUM STATEMENTS:** Statements will be emailed to you next week outlining the topics your child's year group will be covering this term.

**YEAR 6 – SECONDARY TRANSFER 2023:** Open Evenings dates and information have already been emailed to you and together with further information will be added to our website as soon as possible.

### **PARENTS' EVENINGS – Autumn Term:**

- **Wednesday 2nd November – 3.30 – 6.30 p.m.**
- **Thursday 3<sup>rd</sup> November – 3.30 – 5.30 p.m.**

Further information to follow near the time, but please put the dates in your diary.

**L. Wise (Mrs)**  
**Headteacher**

## DATES FOR YOUR SEPTEMBER DIARY:



SEPTEMBER:		
Monday	5 <sup>th</sup>	School reopens
Monday	12 <sup>th</sup>	Year 4 group visit to Epping Forest Year 1 hearing tests
Tuesday	13 <sup>th</sup>	Year 1 hearing tests
Thursday	14 <sup>th</sup>	Year 1 hearing tests
Wednesday	21 <sup>st</sup>	Classes 4A & 4B start swimming lessons.
Half Term: Monday 24 <sup>th</sup> – Friday 28 <sup>th</sup> October		

### BREAKFAST & AFTER SCHOOL CLUBS:

Please register your child at the school if you would like to attend either club at any time. Please be aware that we cannot accept children in the clubs as emergency child care. Each child must be registered with all your contact details and given a regular place.

This is for health and safety as well as insurance reasons.

We need to be fully staffed for the group in the club. All places must be paid for in advance via parentpay.

The last day of the Autumn Term is **Friday 16<sup>th</sup> December** when we close at **2.00 p.m.**

### School Closure Dates: 2022/2023:

#### INSET DAYS: (Staff training)

- Thursday 1<sup>st</sup> September
- Friday 2<sup>nd</sup> September
- Friday 21<sup>st</sup> October
- Tuesday 3<sup>rd</sup> January 2023